

Oase



AquaMax Eco Premium

4000, 6000, 8000, 10000, 12000, 16000, 20000

 **WARNING**

- ▶ **Disconnect all electrical devices in the water from the power supply before reaching into the water. Otherwise there is a risk of severe injuries or death by electrocution.**
 - ▶ **This unit can be used by children aged 8 and above and by persons with reduced physical, sensory or mental capabilities or lack of experience and knowledge if they are supervised or have been instructed on how to use the unit in a safe way and they understand the hazards involved. Do not allow children to play with the unit. Only allow children to carry out cleaning and user maintenance under supervision.**
-

Safety information

Electrical connection

- Special regulations apply for electrical installation in outdoor spaces. Only a qualified electrician may perform the electrical installation.
- The qualified electrician has the necessary professional training, knowledge and experience to perform electrical installation in outdoor spaces. The electrician can detect potential dangers and knows how to adhere to regional and national standards, regulations and directives.
- For your own safety, please consult a qualified electrician.
 - Only connect the unit if the electrical data of the unit and the power supply match.
 - Only plug the unit into a correctly installed outlet. Ensure that the unit is fused for a rated fault current of max. 30 mA by means of a fault current protection device.
 - Extension cables and power distributors (e.g. outlet strips) must be suitable for outdoor use (splash-proof).
 - Protect open plugs and sockets from moisture.

Safe operation

- Do not use the unit, if electrical lines or the housing are damaged.
- Dispose of the unit if its power connection cable is damaged. The power connection cable cannot be replaced.
- The impeller unit in the pump contains a magnet with a strong magnetic field that may affect the operation of pacemakers or implantable cardioverter defibrillators (ICDs). Keep a distance of at least 0.2 m between the implant and the magnet.
- Do not carry or pull the unit by its power cable.

- Route lines in such a way that they are protected from damage and do not present a tripping hazard.
- Never carry out technical changes to the unit.
- Only carry out work on the unit that is described in this manual.
- Only use original spare parts and accessories.
- Should problems occur, please contact the authorised customer service or OASE.

Intended use

Only use the product described in this manual as follows:

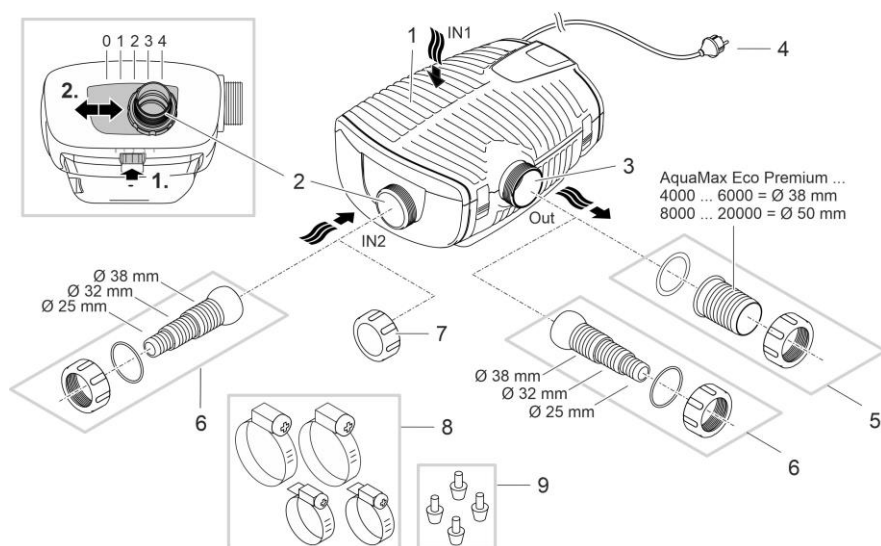
- For pumping normal pond water for filter systems, waterfall systems and water course systems.
- While adhering to the technical specifications. (→ Technical data)
- Adherence to the permissible water quality. (→ Permissible water quality)

The following restrictions apply to the unit:

- Do not use in swimming ponds.
- Never use the unit with fluids other than water.
- Never run the unit without water.
- Do not use in conjunction with chemicals, foodstuff, easily flammable or explosive substances.
- Do not connect to the domestic water supply.
- Do not use for commercial or industrial purposes.
- According to EMC (Electromagnetic Compatibility), this is a class A unit. The unit may cause malfunctions in living environments. It is the user's responsibility to take suitable countermeasures.

Product Description

Overview



AMX0149

- 1 **Inlet 1 (suction side)**
 - Filter housing
-
- 2 **Inlet 2 (suction side)**

Connection of a satellite filter or skimmer.

 -

- The flow rate at inlet 2 and with it the flow ratio of inlet 1 to inlet 2 is adjustable. To do so, re-

lease the locking mechanism and push the connection to one of the following positions:

- Position 0: Inlet 2 is closed, water flow only via inlet 1.
- Position 1/2/3: Inlet 2 is open by approx. 25/50/75 %; meaning water flow via inlet 1 and 2 according to set intake ratio.
- Position 4: Inlet 1 is closed, water flow only via inlet 2.

| | |
|---|--|
| 3 | Outlet (pressure side) |
| | • Connection of the return line into the pond (e.g. via a water course). |
| 4 | Power cable |
| 5 | Hose sleeve for outlet (recommendation). |
| 6 | Stepped hose adapter for inlet 2 and outlet (alternative). |
| 7 | Cover cap for closing inlet 2 when it is not in use. |
| 8 | Hose clips for fastening hoses on the hose sleeves. |
| 9 | Rubber feet for pump holder for dry installation. |

Symbols on the unit

IP68



The unit is dust-tight and water-tight down to 4 m.



Possible danger for persons with pacemakers.



Protect the unit from direct sunlight.

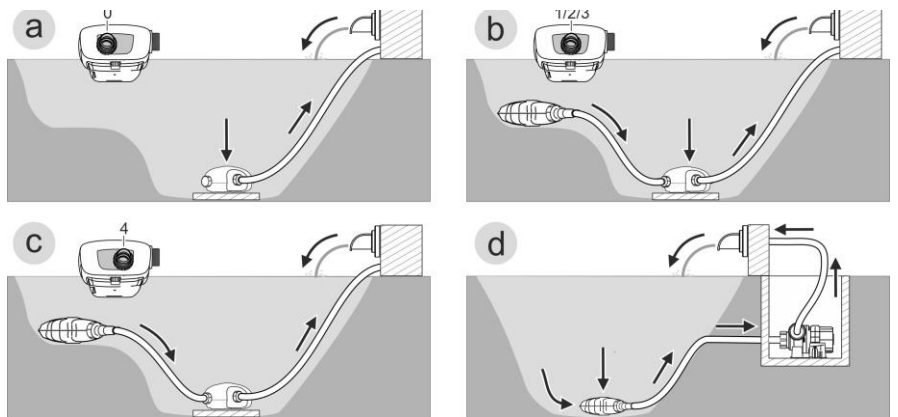


Do not dispose of the unit with normal household waste.



Read the operating instructions.

Installation variants



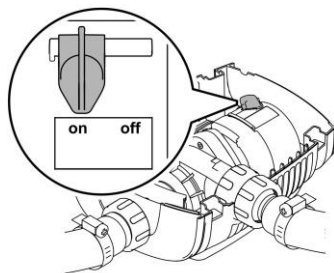
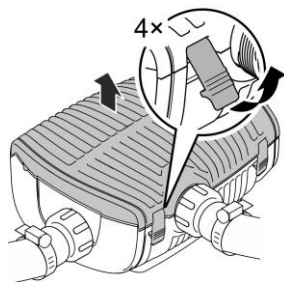
AIMX0138

- **Variant (a):** Water flow only via the filter housing (inlet 1).
 - Set inlet 2 to position "0".
 - Close inlet 2 using the cover cap.
- **Variant (b):** Water flow via the filter housing (inlet 1) and additionally via a satellite filter or a skimmer on inlet 2.
 - Set inlet 2 to position "1", "2" or "3", depending on the desired flow ratio (25/50/75 %).

- Variant (c): Water flow only via a satellite filter or a skimmer on inlet 2. – Set inlet 2 to position "4".
- Variant (d): Dry pump installation.
 - This variant requires the pump to be installed without a filter housing.
 - The pump is installed outside of the pond but lower than the water level.

Seasonal Flow Control (SFC)

Nur AquaMax Eco Premium 12000, 16000 und 20000.



AMX0039

With the SFC function activated, the pump automatically optimises and reduces the amount of water and the delivery head by up to 50%. Thanks to the SFC function the pump adapts to the individual pond ecology throughout the year and supports the pond biology through temperature-dependent circulation (winter mode, transition mode and summer mode).

The SFC function is switched on and off at the pump. The SFC function reduces the power consumption of the pump; without SFC, the pump permanently operates at maximum throughput. The seasonal flow control does not function when the pump is installed on land (dry installation). If a skimmer, satellite filter or Oase InScenio control unit is used, we recommend deactivating the SFC depending on the unit.

Installation and connection

The pump can be installed submerged (in water) or dry (outside the water).

The use of the pump is only permitted with observance of the specified water quality. (→ Permissible water quality)

WARNING

Severe injuries or death due to operation of this unit in a swimming pond. Defective electrical components will electrify the water with dangerous electrical voltage.

► Never operate the unit in a swimming pond.

CAUTION

Rotating components in the intake and pressure socket area. Risk of injury when reaching into the sockets.

In particular, observe the following: A unit that has stopped due to overload can start up unexpectedly!

- ▶ Do not reach into the opening of the intake socket or pressure socket while the power plug is plugged in.
 - ▶ If the sockets are freely accessible during operation, e.g. if no hoses are connected, use a hand guard to secure the sockets. The hand guard is available as an accessory.
-

NOTE

If the pump is used for conveying excessively soiled water, the impeller unit will be subject to increased wear and will require earlier replacement.

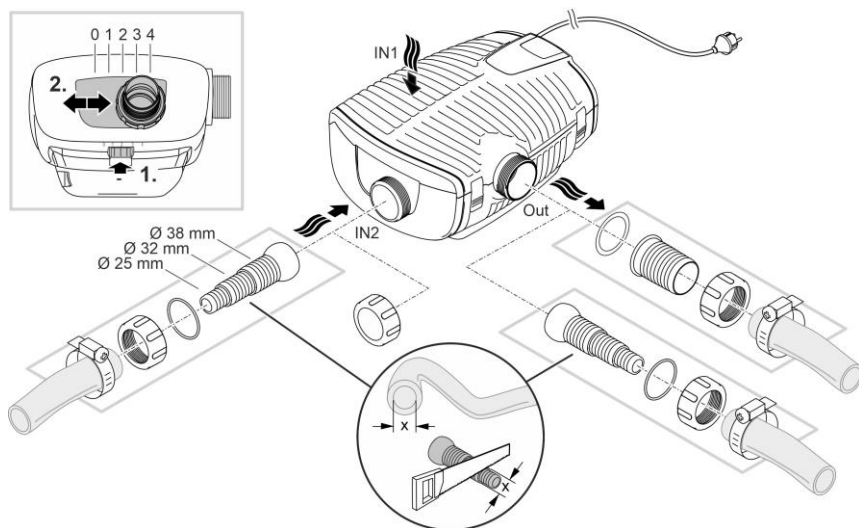
- ▶ Thoroughly clean the pond or pool before installing the pump.
 - ▶ Install the pump at a raised level above the bottom of the pond. This reduces intake of muddy water.
-

- ① Avoid direct sunlight on unit components that are not submerged, as they may overheat. If necessary, use a protective cover.

Submerged installation of the pump

Connecting

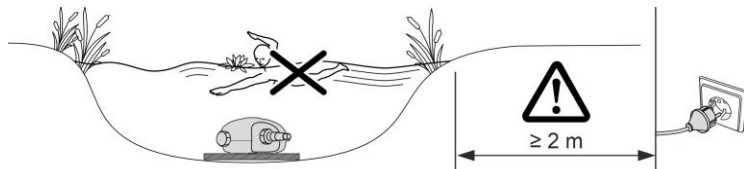
Connect the pump according to the desired installation variant. (→ Installation variants)



AMX0150

Do not plug the power plug into the socket yet!

Installation

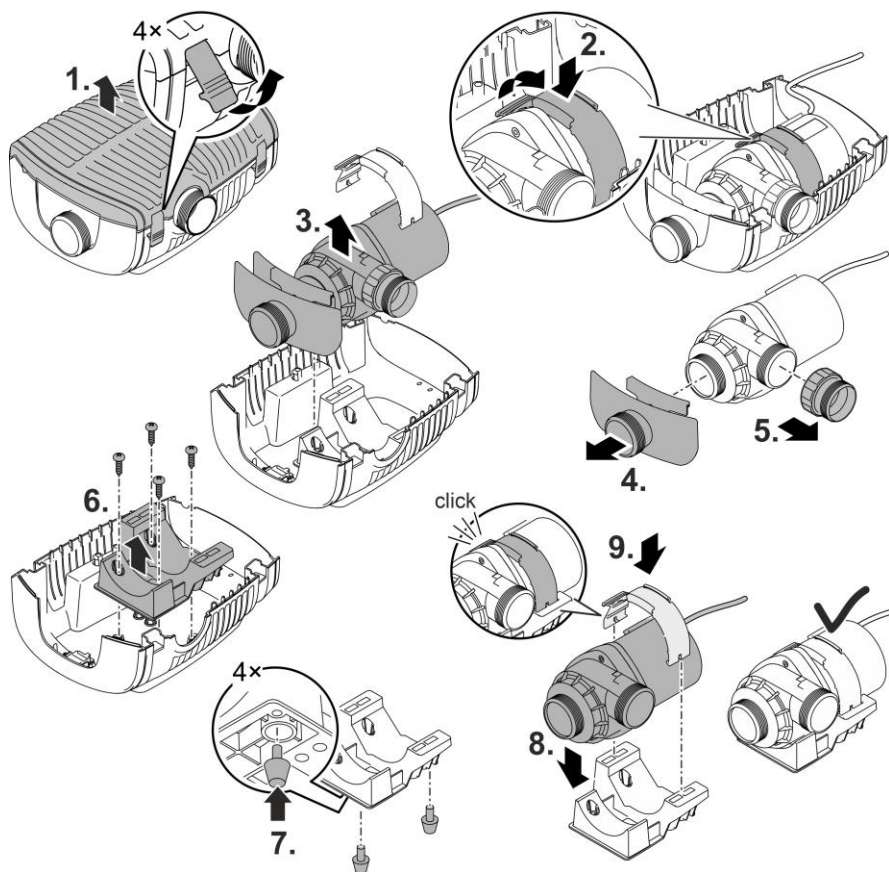


- Place the pump horizontally on a stable, mud-free surface.
 - Ensure secure and stable positioning of the pump.
 - Only operate the pump when it is fully submerged.
- ① The pull rope allows you to simply pull the pump from the water.
- Fasten the pull rope on the bottom filter casing through the round openings and make a knot.

Install the unit at a dry place

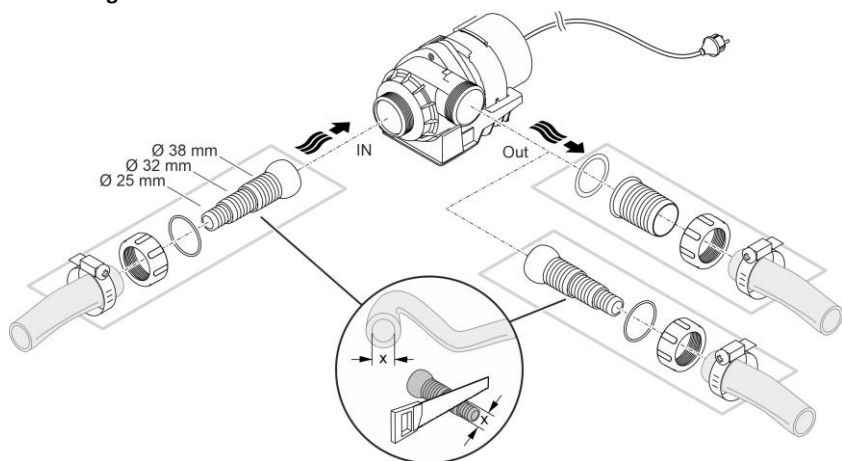
Dry installation requires the pump to be installed without a filter housing.

Conversion to dry run pump



AMX0144

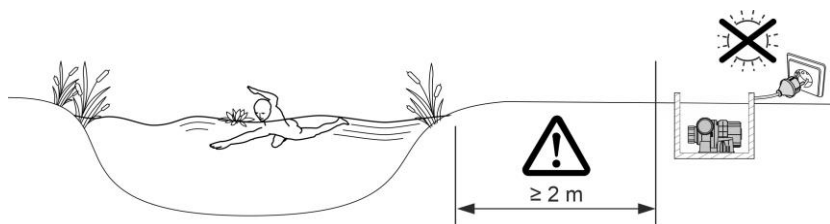
Connecting



AMX0151

Do not plug the power plug into the socket yet!

Installation



AMX0153

- Place the pump horizontally on a stable, mud-free surface.
- Ensure secure and stable positioning of the pump.

Commissioning/start-up

NOTE

Prevent the pump from running dry. Otherwise the pump will be destroyed.

- ▶ Only operate the pump when it is submerged or flooded.
-

Switching ON/OFF

- Switching on: Plug the power plug into the outlet. – The unit switches on immediately.
- Switching off: Pull the power plug from the outlet.

Environmental Function Control (EFC)

When started up, the pump automatically performs a pre-programmed self-test (Environmental Function Control (EFC)). The pump detects if it is running dry / blocked or submerged. The pump shuts down automatically after 60 to 120 seconds if it runs dry/is blocked. In the event of a malfunction, disconnect the power supply and “flood the pump” or remove the obstacle. Afterwards, the unit can be restarted.

Maintenance and cleaning

CAUTION

Risk of injury due to unexpected start-up. Internal monitoring functions may switch off the unit and automatically reactivate it.

- ▶ Disconnect the power plug before carrying out any work on the unit.
-

NOTE

Do not use aggressive cleaning agents or chemical solutions. These agents can damage the housing, impair the function of the device and harm animals, plants and the environment.

- ▶ If possible, clean the unit with clear water and a soft brush or a sponge; remove stubborn dirt with the aid of the recommended cleaning agents.
-

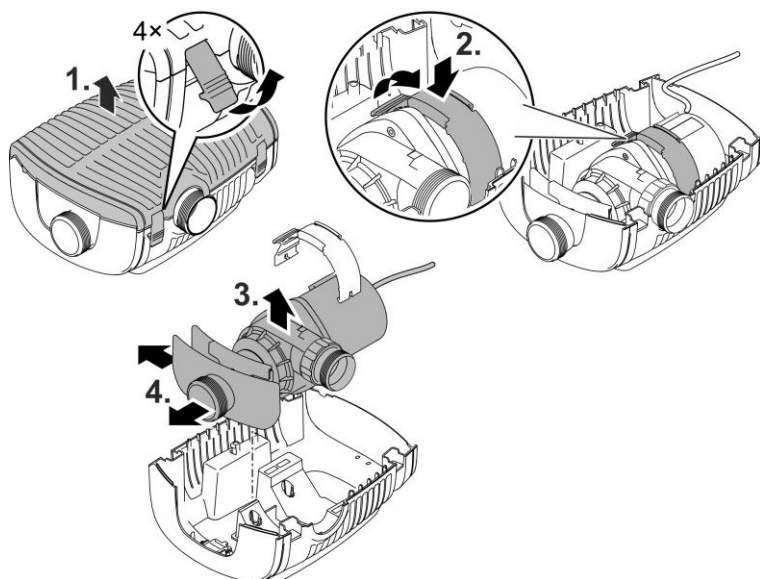
Cleaning the device

- ① Clean the unit as required but at least twice per year.

- When cleaning the pump, pay particular attention to the impeller unit and the pump housing.
- Recommended cleaning agent for removing stubborn limescale deposits:
 - Pump cleaning agent PumpClean from OASE.
 - Vinegar- and chlorine-free household cleaning agent.
- After cleaning, thoroughly rinse all parts in clean water.

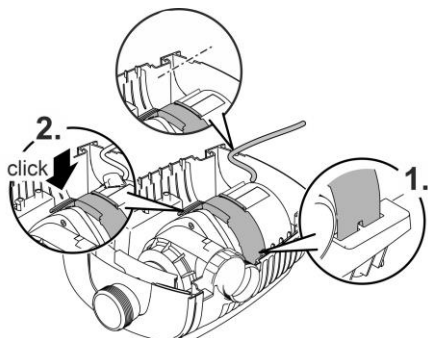
Removing/cleaning the pump

- Pull the power plug and remove all connections.
- Dismantle the unit as shown in the figure.



AMX0145

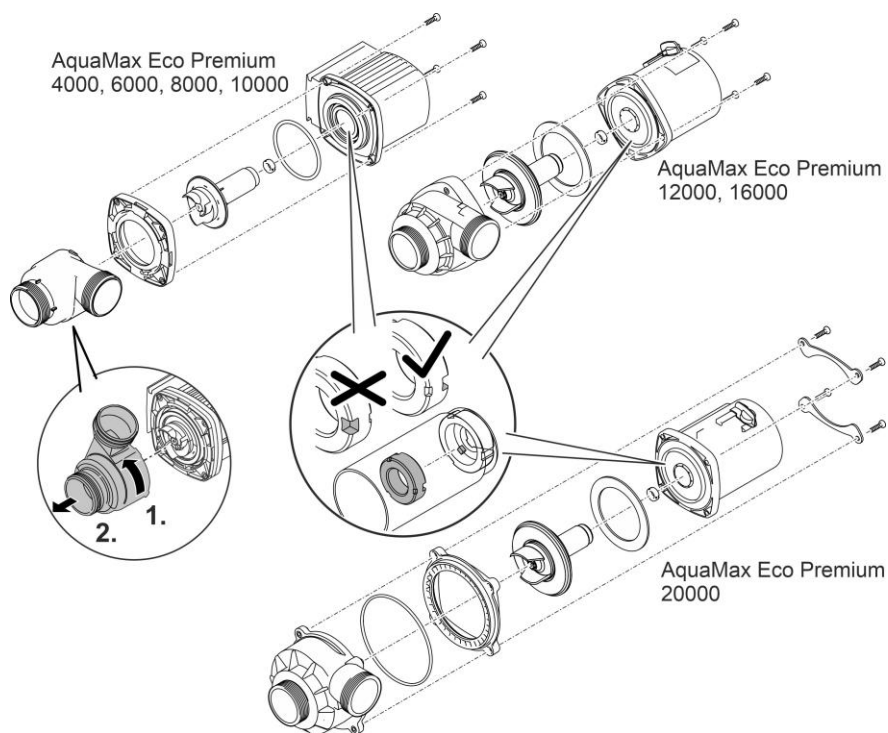
- Reassemble the unit in reverse order.
- During reassembly check that
 - the clamp fastening the pump in the holder is securely engaged.
 - the connection cable is guided out through the groove in the housing and that it is not kinked or pinched significantly.



AMIX0146

Cleaning/replacing the impeller unit

- Dismantle the pump as shown in the figure.
- Use a brush under clear water to clean the components.
- Check all components for damage. Replace damaged or worn components.
- Assemble the pump in reverse order. ① When the impeller is pulled out, the radial bearing in the motor housing may come loose. During reassembly, check that it is positioned correctly. If necessary, push the radial bearing into the motor housing with the wide grooves first.



AMX0154

Storage/winter protection

The unit is frost resistant to minus 20 °C. Should you store the unit outside of the pond, clean it thoroughly with a soft brush and water, check it for damage, then store immersed in water or filled with water. Do not immerse the power plug in water!

Malfunction remedy

| Malfunction | Cause | Remedy |
|--|-------------------------------------|--|
| Pump does not start | No mains voltage | Check the mains voltage. |
| | Supply lines kinked | Route the supply lines without kinks |
| | Supply lines blocked. | Check/clean the supply lines |
| | Impeller unit is blocked | Remove blockage, check impeller unit for ease of movement |
| Pump does not transport fluid Insufficient delivered quantity | Filter housing clogged | Clean strainer casings |
| | Excessive loss in the supply lines | Reduce hose length to the necessary minimum, remove unnecessary connection parts |
| | Impeller unit is running sluggishly | Check impeller unit for ease of movement |
| Pump switches off after operating briefly | Water heavily soiled | Clean pump |
| | Impeller unit is blocked | Remove blockage, check impeller unit for ease of movement |
| | Pump has run dry | Check/clean the supply lines |
| | Water temperature too high | Adhere to the maximum permissible water temperature. (→ Technical data) |

Technical data

Unit data

| AquaMax Eco Premium | | 4000 | 6000 | 8000 | 10000 |
|--|------------------------------------|-------------------------------|-------------|----------------|----------------|
| Connection voltage | | V AC | 220 ... 240 | | |
| Mains frequency | Hz | 50/60 | 50/60 | 50/60 | 50/60 |
| Max. power consumption | W | 35 | 45 | 60 | 88 |
| Max. pump capacity | l/h | 4000 | 6000 | 8000 | 10000 |
| Max. pump head | m | 3.3 | 3.7 | 4.1 | 4.7 |
| Protection type | | IP68 | IP68 | IP68 | IP68 |
| Max. immersion depth | m | 4 | 4 | 4 | 4 |
| Inlet port | Thread | G2 | G2 | G2 | G2 |
| | Connection, hose mm | 25, 32, 38 | 25, 32, 38 | 25, 32, 38 | 25, 32, 38 |
| Outlet port | Thread | G2 | G2 | G2 | G2 |
| | Connection, hose mm | 25, 32, 38 | 25, 32, 38 | 25, 32, 38, 50 | 25, 32, 38, 50 |
| Max. particle size, coarse dirt particles | mm | 10 | 10 | 10 | 10 |
| Filter supply surface area | cm ² | 1000 | 1000 | 1000 | 1000 |
| Water temperature (submerged installation) | During operation °C | (– Permissible water quality) | | | |
| | Out of operation °C | -20 ... +35 | -20 ... +35 | -20 ... +35 | -20 ... +35 |
| Ambient temperature | During operation and convection °C | +4 ... +30 | +4 ... +30 | +4 ... +30 | +4 ... +30 |

| | | | | | | |
|---|-------------------------------------|----|-------------------------------|----------------|----------------|------------|
| (dry installation) | During operation and forced cooling | °C | +4 ... +40 | +4 ... +40 | +4 ... +40 | +4 ... +40 |
| Dimensions | Length | mm | 340 | 340 | 340 | 340 |
| | Width | mm | 280 | 280 | 280 | 280 |
| | Height | mm | 165 | 165 | 165 | 165 |
| Connection cable length | m | | 10 | 10 | 10 | 10 |
| Weight | kg | | 5.3 | 5.3 | 5.3 | 5.3 |
| AquaMax Eco Premium | | | 12000 | 16000 | 20000 | |
| Connection voltage | V AC | | 220 ... 240 | 220 ... 240 | 220 ... 240 | |
| Mains frequency | Hz | | 50/60 | 50/60 | 50/60 | |
| Max. power consumption | W | | 110 | 145 | 180 | |
| Max. pump capacity | l/h | | 12000 | 15600 | 19500 | |
| Max. pump head | m | | 5.0 | 5.2 | 5.4 | |
| Protection type | | | IP68 | IP68 | IP68 | |
| Max. immersion depth | m | | 4 | 4 | 4 | |
| Inlet port | Thread | | G2 | G2 | G2 | |
| | Connection, hose | mm | 25, 32, 38 | 25, 32, 38 | 25, 32, 38 | |
| Outlet port | Thread | | G2 | G2 | G2 | |
| | Connection, hose | mm | 25, 32, 38, 50 | 25, 32, 38, 50 | 25, 32, 38, 50 | |
| Max. particle size, coarse dirt particles | mm | | 11 | 11 | 11 | |
| Filter supply surface area | cm ² | | 1000 | 1000 | 1000 | |
| Water temperature | During operation | °C | (– Permissible water quality) | | | |
| (submerged installation) | Out of operation | °C | -20 ... +35 | -20 ... +35 | -20 ... +35 | |
| Ambient temperature (dry installation) | During operation and convection | °C | +4 ... +30 | +4 ... +30 | +4 ... +30 | |
| | During operation and forced cooling | °C | +4 ... +40 | +4 ... +40 | +4 ... +40 | |
| Dimensions | Length | mm | 340 | 340 | 340 | |
| | Width | mm | 280 | 280 | 280 | |
| | Height | mm | 165 | 165 | 165 | |
| Connection cable length | m | | 10 | 10 | 10 | |
| Weight | kg | | 5.4 | 5.4 | 6.1 | |

Permissible water quality

| Fresh water, pond water | | |
|-------------------------|------|-------------|
| pH value | | 6.8 ... 8.5 |
| Hardness | °dH | 8 ... 15 |
| Free chlorine | mg/l | <0.3 |
| Chloride content | mg/l | <250 |
| Salt content | % | <0.4 |
| Overall dry residue | mg/l | <50 |
| Temperature | °C | +4 ... +35 |

Wear parts

- Impeller unit
- Bearing in the motor block

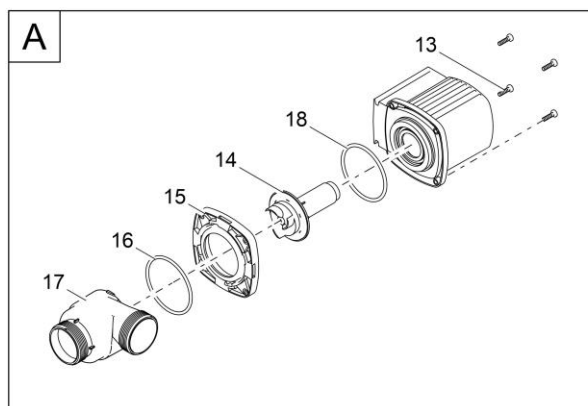
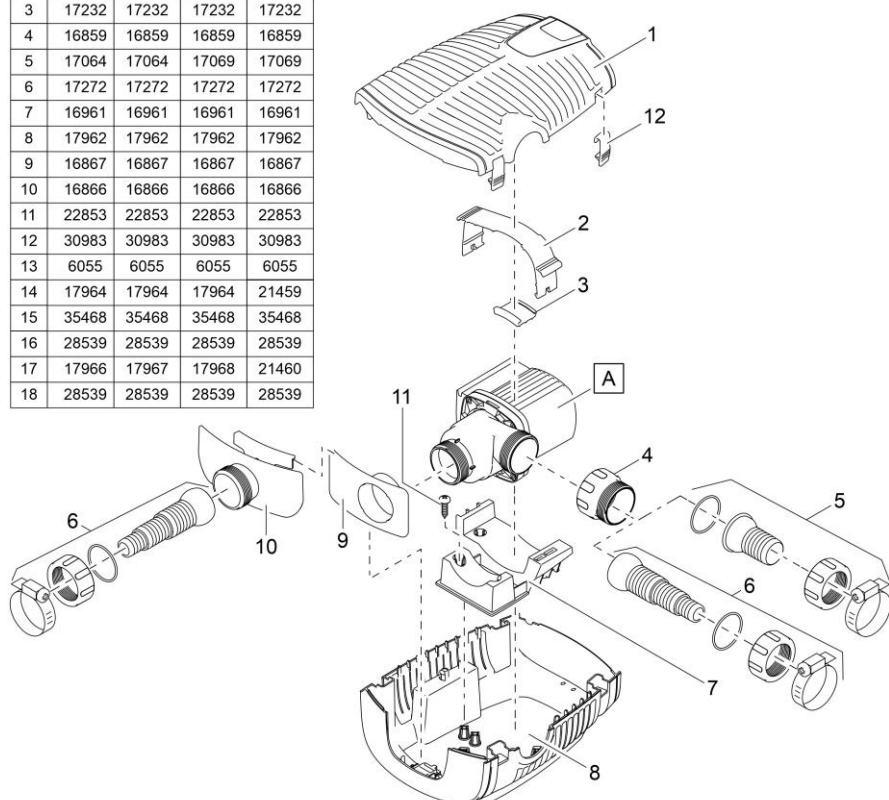
Disposal

NOTE

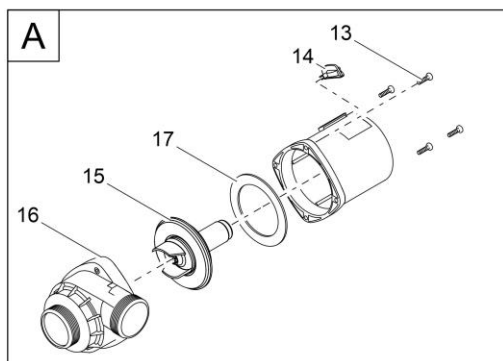
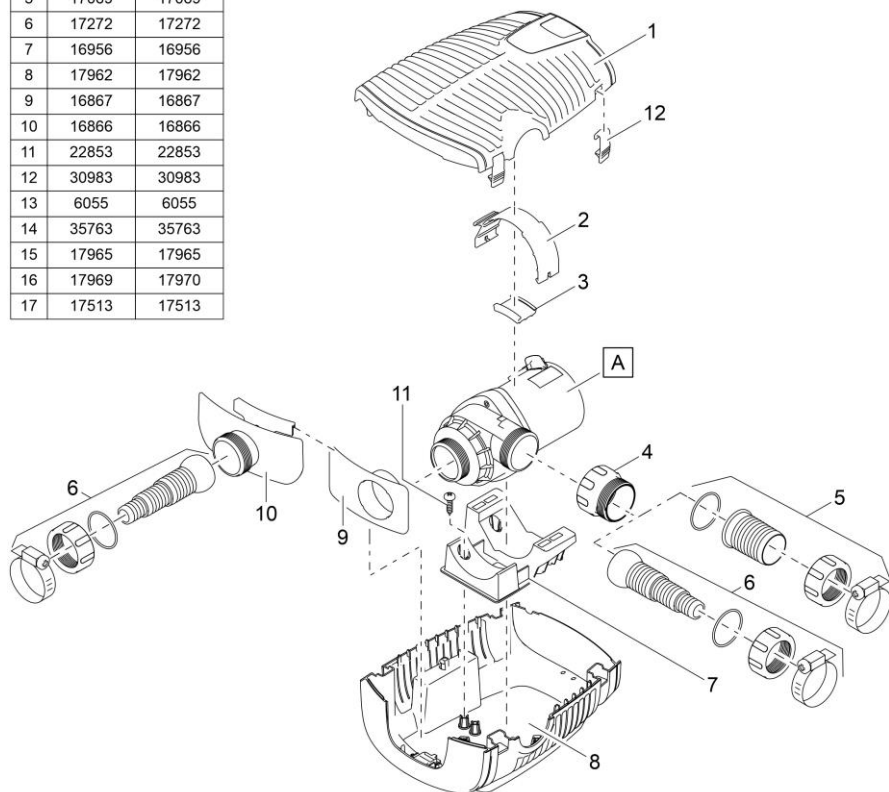
Do not dispose of this unit with household waste.

- ▶ Dispose of the unit by using the return system provided for this purpose.
- ▶ Should you have questions, please contact your local disposal company. They will give you information on how to correctly dispose of the unit.
- ▶ Render the unit unusable by cutting the cables.

| | AquaMax Eco Premium | | | |
|------|---------------------|-------|-------|-------|
| Pos. | 4000 | 6000 | 8000 | 10000 |
| 1 | 17963 | 17963 | 17963 | 17963 |
| 2 | 16978 | 16978 | 16978 | 16978 |
| 3 | 17232 | 17232 | 17232 | 17232 |
| 4 | 16859 | 16859 | 16859 | 16859 |
| 5 | 17064 | 17064 | 17069 | 17069 |
| 6 | 17272 | 17272 | 17272 | 17272 |
| 7 | 16961 | 16961 | 16961 | 16961 |
| 8 | 17962 | 17962 | 17962 | 17962 |
| 9 | 16867 | 16867 | 16867 | 16867 |
| 10 | 16866 | 16866 | 16866 | 16866 |
| 11 | 22853 | 22853 | 22853 | 22853 |
| 12 | 30983 | 30983 | 30983 | 30983 |
| 13 | 6055 | 6055 | 6055 | 6055 |
| 14 | 17964 | 17964 | 17964 | 21459 |
| 15 | 35468 | 35468 | 35468 | 35468 |
| 16 | 28539 | 28539 | 28539 | 28539 |
| 17 | 17966 | 17967 | 17968 | 21460 |
| 18 | 28539 | 28539 | 28539 | 28539 |



| AquaMax Eco Premium | | |
|---------------------|-------|-------|
| Pos. | 12000 | 16000 |
| 1 | 17963 | 17963 |
| 2 | 16982 | 16982 |
| 3 | 17232 | 17232 |
| 4 | 16859 | 16859 |
| 5 | 17069 | 17069 |
| 6 | 17272 | 17272 |
| 7 | 16956 | 16956 |
| 8 | 17962 | 17962 |
| 9 | 16867 | 16867 |
| 10 | 16866 | 16866 |
| 11 | 22853 | 22853 |
| 12 | 30983 | 30983 |
| 13 | 6055 | 6055 |
| 14 | 35763 | 35763 |
| 15 | 17965 | 17965 |
| 16 | 17969 | 17970 |
| 17 | 17513 | 17513 |



| AquaMax Eco Premium 20000 | | | |
|---------------------------|-------|------|-------|
| Pos. | | Pos. | |
| 1 | 17963 | 11 | 22853 |
| 2 | 16982 | 12 | 30983 |
| 4 | 16859 | 13 | 13082 |
| 5 | 17069 | 14 | 30218 |
| 6 | 17272 | 15 | 35763 |
| 7 | 30231 | 17 | 30538 |
| 8 | 17962 | 18 | 30217 |
| 9 | 16867 | 19 | 89058 |
| 10 | 16866 | 20 | 30235 |

